

Connected Systems

People Finder Feature for SharePoint Foundation 2010

Installation Guide

Version number:	1.0
Release date:	Thursday, 12 January 2012
Pages	8

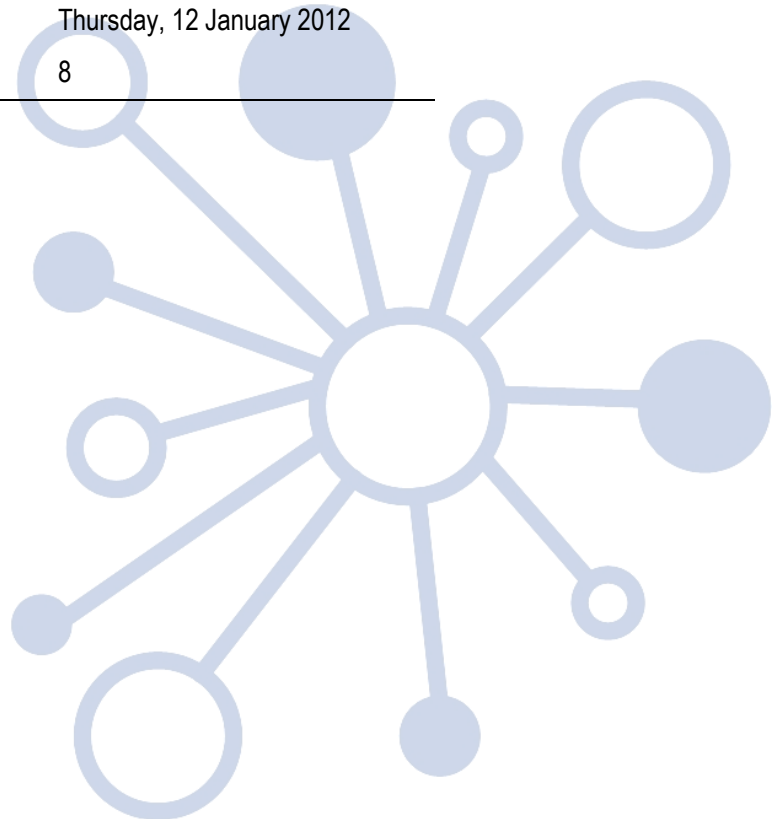


Table of Contents

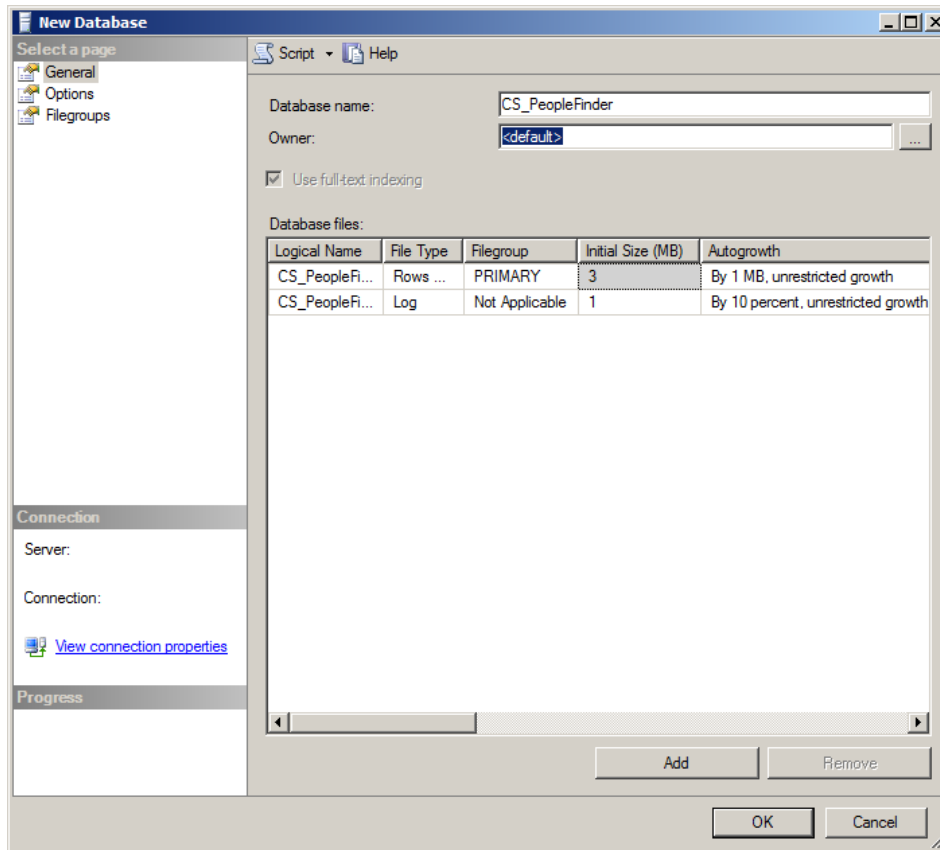
1	INSTALLATION	3
1.1	INSTALL SQL DATABASE	3
1.2	ADDING SOLUTIONS TO SHAREPOINT	4
1.3	DEPLOYING THE SOLUTION TO SHAREPOINT	4
1.3.1	<i>Via STSADM</i>	4
1.3.2	<i>Via Central Administration</i>	4
1.4	CONFIGURE THE TIMER JOB	7
1.5	KICK OFF TIMER JOB	8

1 Installation

The Connected Systems Search4Someone Feature for SPF 2010 installation process is relatively straight forward. Parts of the install are manual whilst most of the install has been packaged into a SharePoint Solution called a WSP files. It has been scope at the “Farm” level which means it is available to every site collection in the Farm.

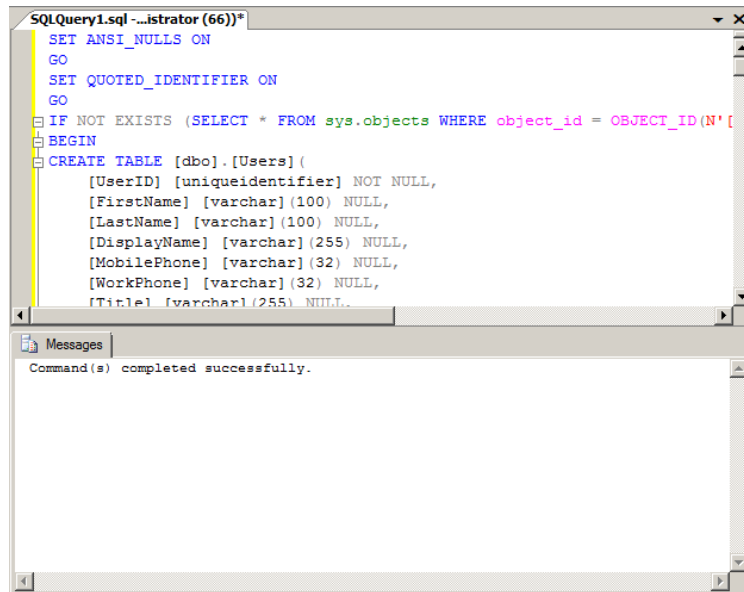
1.1 Install SQL database

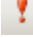
From SQL Server Management Studio Create a new database in SQL server. Right-click Databases|New Database.



On the New Database dialog, type in CS_PeopleFinder as the name and leave all other options as the defaults.

Right click the database and select New Query.



Paste the SQL in from the CS_PeopleSearch.sql and click the execute button  Execute to create the database.

1.2 Adding Solutions to SharePoint

The WSPs are added to the Solution store like any other WSP solution, this is done using the following commands: (please ensure the STSADM command is accessible via the PATH environment variable)

```
STSADM -o addsolution -filename CS.SharePoint.PeopleSearch.wsp
```

```
STSADM -o addsolution -filename CS.SharePoint.PeopleSearch.WebParts.wsp
```

1.3 Deploying the Solution to SharePoint

Once added to the solution store using the commands listed above, each feature can be deployed to the appropriate site collection(s). This can be achieved using the following methods, either via STSADM or Central Administration.

1.3.1 Via STSADM

The STSADM command is:

```
STSADM -o deploysolution -name CS.SharePoint.PeopleSearch.wsp -url  
http://<sitenam> -immediate -allowgacdeployment -force
```

```
STSADM -o deploysolution -name CS.SharePoint.PeopleSearch.WebParts.wsp -url  
http://<sitenam> -immediate -allowgacdeployment -force
```

1.3.2 Via Central Administration

Alternatively, deployment of the solutions is achieved via “Central Administration | System Settings | Farm Management | Manage farm solutions”

Microsoft SharePoint 2010 Central Administration > System Settings

- Central Administration
 - Application Management
 - System Settings**
 - Monitoring
 - Backup and Restore
 - Security
 - Upgrade and Migration
 - General Application Settings
 - Configuration Wizards
- Servers
 - Manage servers in this farm | Manage services on server
- E-Mail and Text Messages (SMS)
 - Configure outgoing e-mail settings |
 - Configure incoming e-mail settings |
 - Configure mobile account
- Farm Management
 - Configure alternate access mappings |
 - Manage farm features | **Manage farm solutions** |
 - Manage user solutions | Configure privacy options |
 - Configure cross-firewall access zone

Once selected and assuming there are no other solutions deployed to your farm, the solution will be listed as follows.

Microsoft SharePoint 2010 Central Administration > Solution Management
This page has a list of the Solutions in the farm.

Name	Status	Deployed To
cs.sharepoint.peoplesearch.webparts.wsp	Not Deployed	None
cs.sharepoint.peoplesearch.wsp	Not Deployed	None

On selecting the “cs.sharepoint.peoplesearch.wsp”, select the “Deploy Solution” command on the next screen. This will present the following:

Microsoft SharePoint 2010 Central Administration > Deploy Solution
Use this page to deploy the solution.

<p>Solution Information Information on the solution you have chosen to deploy.</p> <p>Deploy When? A timer job is created to deploy this solution. Please specify the time at which you want this solution to be deployed.</p> <p>Deploy To? The solution contains Web application scoped resources and should be deployed to specific Web applications. Please choose the Web application where you want the solution to be deployed.</p>	<p>Name: cs.sharepoint.peoplesearch.wsp</p> <p>Locale: 0</p> <p>Deployed To: None</p> <p>Deployment Status:</p> <p>Choose when to deploy the solution:</p> <p><input checked="" type="radio"/> Now</p> <p><input type="radio"/> At a specified time: 1/12/2012 1 PM 00</p> <p>Choose a Web application to deploy this solution: All content Web applications</p> <p><small>Warning: Deploying this solution will place assemblies in the global assembly cache. This will grant the solution assemblies full trust. Do not proceed unless you trust the solution provider.</small></p>
---	--

OK Cancel

Please note that this solution deploys to a specific web application, select the web application to deploy to and select OK to deploy. Once deployed, you'll be returned back to the Solution Management page. The deployment status should be “Deployed” on the solutions.

On selecting the “cs.sharepoint.peoplesearch.webparts.wsp”, select the “Deploy Solution” command on the next screen. This will present the following:

Microsoft SharePoint 2010 Central Administration > Deploy Solution
Use this page to deploy the solution.

Central Administration
Application Management
System Settings
Monitoring
Backup and Restore
Security
Upgrade and Migration
General Application Settings
Configuration Wizards

Solution Information
Information on the solution you have chosen to deploy.

Name: cs.sharepoint.peoplesearch.webparts.wsp
Locale: 0
Deployed To: None
Deployment Status:

Deploy When?
A timer job is created to deploy this solution. Please specify the time at which you want this solution to be deployed.

Choose when to deploy the solution:
 Now
 At a specified time:
3/4/2011 3 PM 00

Deploy To?
The solution contains Web application scoped resources and should be deployed to specific Web applications. Please choose the Web application where you want the solution to be deployed.

Choose a Web application to deploy this solution:
All content Web applications

Warning: Deploying this solution will place assemblies in the global assembly cache. This will grant the solution assemblies full trust. Do not proceed unless you trust the solution provider.

OK Cancel

Please note that this solution deploys to a specific web application, select the web application to deploy to and select OK to deploy. Once deployed, you'll be returned back to the Solution Management page. The deployment status should be “Deployed” on the solutions.

1.4 Configure the Timer Job

Open the Central Admin website and navigate to: Monitoring | Configure CS People Sync Job. Below are the configuration values to be set.

Microsoft SharePoint 2010 Central Administration > People Search Sync Job

This page allows you to manage the People Search AD sync job. This job synchronises user / contact data from Active Directory with a SQL server database used by the Connected Systems People Search feature.

Central Administration

- Application Management
- System Settings
- Monitoring
- Backup and Restore
- Security
- Upgrade and Migration
- General Application Settings
- Configuration Wizards

Recycle Bin
All Site Content

Domain Controller	<input type="text"/>
LDAP connection string used to connect to domain controller. E.g. LDAP://corporate.mycompany.com.	
User Name	<input type="text"/>
User name of account used to connect to domain controller.	
Password	<input type="text"/>
Password of account used to connect to domain controller.	
LDAP Filter String	<input type="text"/>
Filter string for LDAP query. E.g. "(&(objectClass=person)(objectClass=contact))"	
Connection String	<input type="text"/>
Connection string used to connect to WSS User Profile database.	
Picture Site URL	<input type="text"/>
URL of picture site.	
Picture Relative Web URL	<input type="text"/>
URL of web containing picture library, relative to the root site. E.g. if pictures are in http://intranet/photos then the URL would be "/". If pictures are in http://intranet/HR/photos, then the URL would be "/HR".	
Picture File Path	<input type="text"/>
File path to picture library - usually the name of the picture library (and the folder(s) within, if applicable). For example if a sample picture URL is http://intranet/photos/jblogs.jpg, the file path would be "photos".	

OK Cancel

- Domain controller: e.g. LDAP://192.168.0.72
- LDAP filter: (samples below)
 - (&(objectCategory=person)(objectClass=user)) = All users (no contacts)
 - (&(objectCategory=person)(objectClass=contact)) = All contacts (no users)
 - (&(objectCategory=person)) = All users and contacts
- SQL Connection String: Server=test;Database=CS_PeopleFinder;Trusted_Connection=True;
 - If connection to a SQL instance, format of server reference is <server>\<instance>
- Picture site URL: <http://<server>>
- Picture relative web url: /
- Picture file path: StaffPhotos

After selecting “OK”, it will attempt to connect to the domain controller and validate access using the credentials entered. An error will error if the account doesn’t have sufficient privileges.

1.5 Kick off timer job

Navigate to Monitoring | Review Job definitions. Click on CS Active Directory Sync Job.

The screenshot shows the 'Edit Timer Job' interface in SharePoint 2010 Central Administration. The page title is 'Central Administration > Edit Timer Job' with a subtitle 'Use this page to change or delete a timer job.' The left navigation pane includes 'Timer Links' (Timer Job Status, Scheduled Jobs, Running Jobs, Job History, Job Definitions) and 'Central Administration' (Application Management, System Settings, Monitoring, Backup and Restore, Security, Upgrade and Migration, General Application Settings, Configuration Wizards). The main content area is divided into sections: 'Job Title' (CS Active Directory Sync Job), 'Job Description' (empty), 'Job Properties' (Web application: N/A, Last run time: 3/4/2011 2:54 PM), and 'Recurring Schedule'. The 'Recurring Schedule' section contains a detailed instruction on how to modify the schedule and a list of options: Minutes, Hourly, Daily (selected), Weekly, and Monthly. The 'Daily' option is selected, and the schedule is set to 'Starting every day between 6 AM and no later than 6 AM'. At the bottom of the form are four buttons: 'Run Now', 'Disable', 'OK', and 'Cancel'.

Select the Recurring Schedule you would like this job to run. To run the job immediately, click the “Run Now” button.

Progress of the job will be reported in the application event log.

Select the “Timer Job Status” link on the top left and scroll down to see the status of the “CS Active Directory Sync” job.

You can also select “Job History” on the left menu and scroll down to see if the “CS Active Directory Sync” job succeeded.

Please Note: The Service Account running as the primary SharePoint Farm Service Account need to be “db_owner” Role Member of the dbo.Users table, otherwise an access denied error with occur for the service account. Check the Event Log using Event Viewer under “Applications and Service Logs | Connected Systems”

Please Note: If running with Anonymous Enabled in IIS, please ensure the Anonymous Service Account referenced in IIS has access to the SQL DB. “NT Authority\IUSR” is not able to be assigned access to the SQL DB.