

Connected Systems

Content Rollup Web Part for SharePoint Foundation 2010

Installation Guide

Version number:	1.0
Release date:	Thursday, 3 March 2011
Pages	12

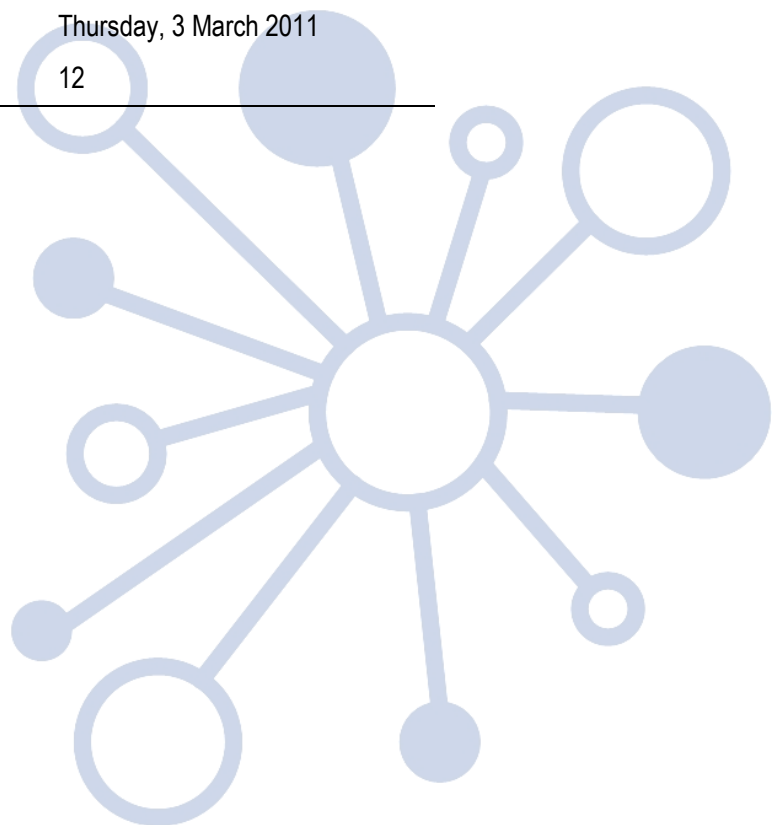


Table of Contents

1	OVERVIEW	3
2	LIST QUERY OPTIONS.....	4
3	QUERY SCOPE OPTIONS	5
4	SPECIFYING QUERY XSL	6
5	SPECIFYING A CAML QUERY	7
6	SPECIFYING FIELD NAMES	8
7	HOW TO: ADD AN EXTRA FIELD TO THE CONTENT ROLL-UP.....	9
8	HOW TO: FORMAT A DATE USING XSLT SCRIPTLETS.....	10
9	HOW TO: FORMAT A LOOKUP VALUE USING XSLT SCRIPTLET	12

1 Overview

The content roll-up web part can be used to retrieve content recursively from a site collection and display it as HTML. List data is retrieved using the SPSiteDataQuery component in the API, formatted as XML and then transformed for display using XSLT. This document details the configuration options made available by the roll-up web part.

The image shows a 'Preview' window titled 'Connected Systems Roll-Up'. The configuration options are as follows:

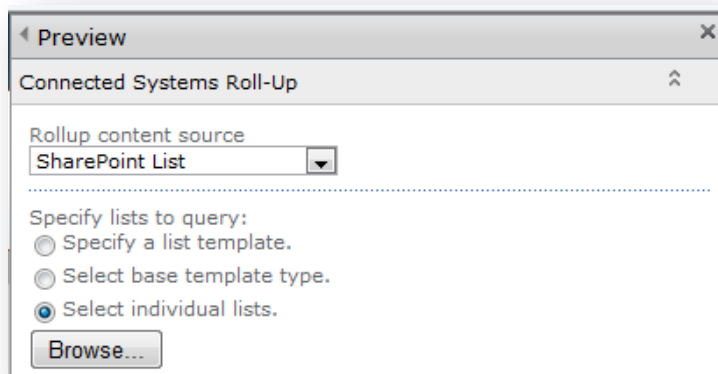
- Rollup content source:** A dropdown menu set to 'SharePoint List'.
- Specify lists to query:** Three radio buttons: 'Specify a list template.', 'Select base template type.', and 'Select individual lists.' (which is selected). A 'Browse...' button is below.
- Scope:** Two radio buttons: 'Entire site collection.' (selected) and 'Current web and sub-webs.'
- CAML query:** An 'Edit...' button.
- Field names:** An 'Edit...' button.
- Item limit:** An empty text input field.
- XSL string:** An 'Edit...' button.
- Debug mode:** An unchecked checkbox.
- Permissions:** A large empty text area with a small icon in the bottom right corner.

2 List Query Options

List query options allow you to specify the lists or list types the rollup web part is going to use when retrieving content. The following options are available:

- List template: allows selection of a specific list template type (e.g. publishing pages libraries)
- Base template type: allows selection of a more generic “base” list template (e.g. all document libraries) – this will include document libraries and any list templates that inherit from document library such as wiki page libraries and picture libraries.
- Individual lists: allows individual lists to be selected using the list picker.

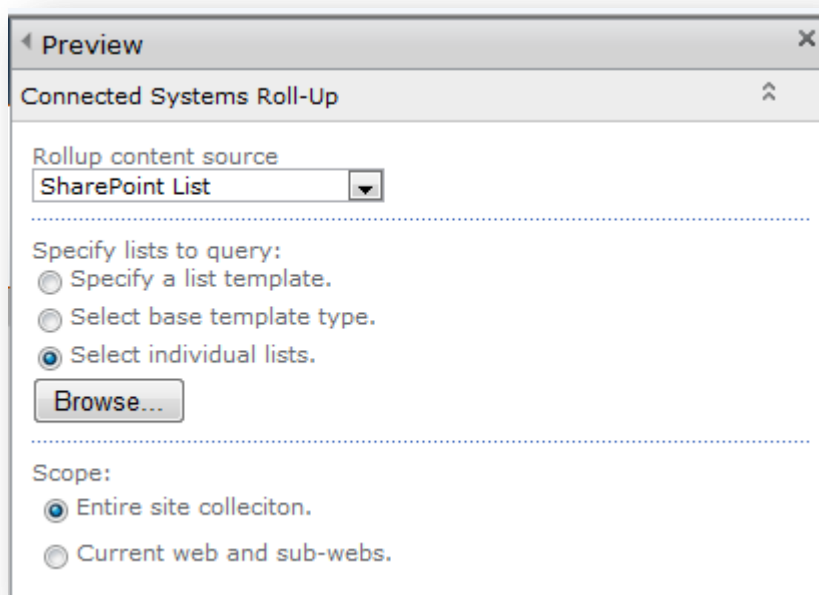
Note: if you wish to roll-up all content of a particular content type then you will need to use the CAML query function.



3 Query Scope Options

The query scope determines which webs are used in the content query. The following options are available:

- Entire site collection
- Current web and sub-webs

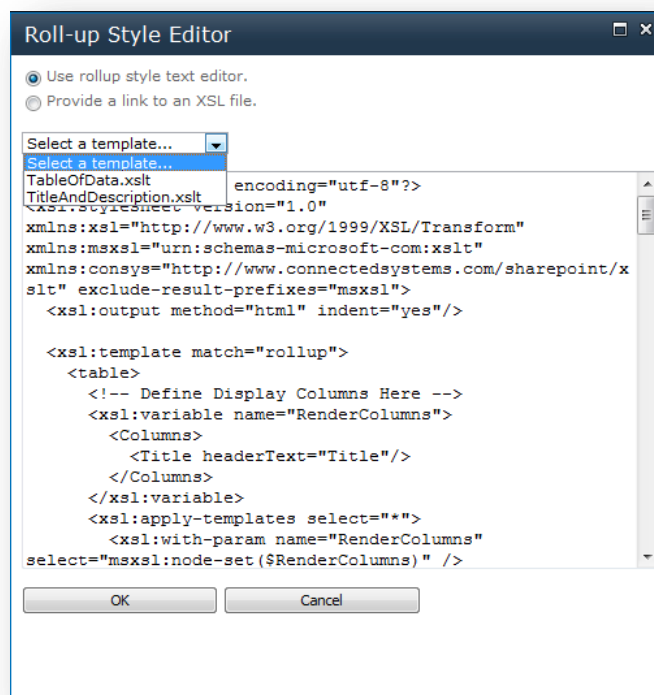


4 Specifying Query XSL

XSL is used to transform the list data into HTML. There are two options when specifying the XSL transform:

- User rollup style text editor: edit XSL directly in the web part
- Provide a link to an XSL file: upload an XSL file and specify the link

See sections on XSL editing for more details on customising rollup styles.

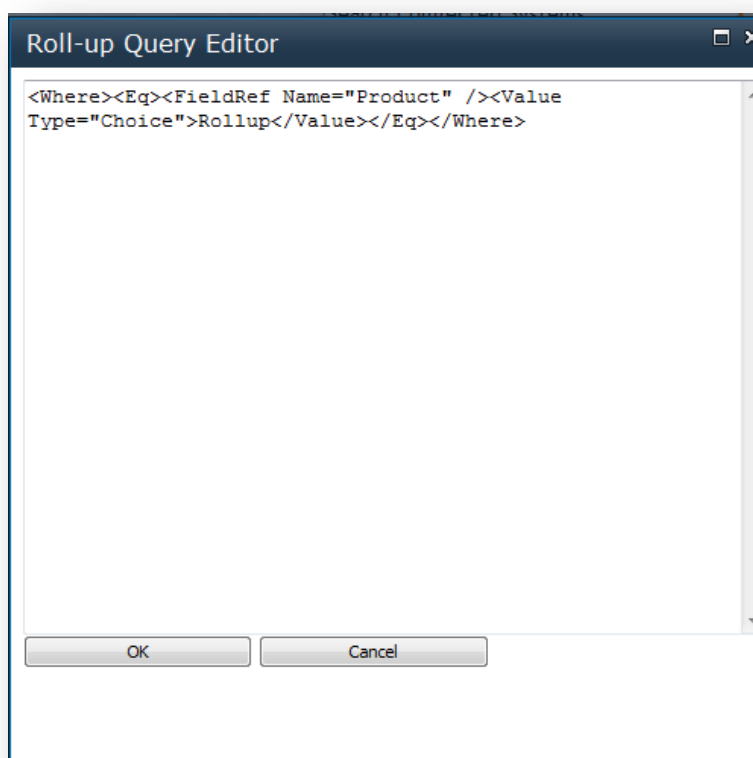


5 Specifying a CAML Query

An optional CAML query can be specified to filter the data. This can be written by hand or generated using the U2U CAML builder tool. Note: the old version of the CAML builder tool works if you use the windows version and connect via web services.

Note: the <query> tag should be omitted from the CAML query when pasting it into the web part.

Note: if you are querying content from multiple lists with a CAML filter expression, it is recommended that you only filter on fields that are site columns. Using site columns is the only way you can guarantee that the internal / static name of the field is identical across multiple lists.

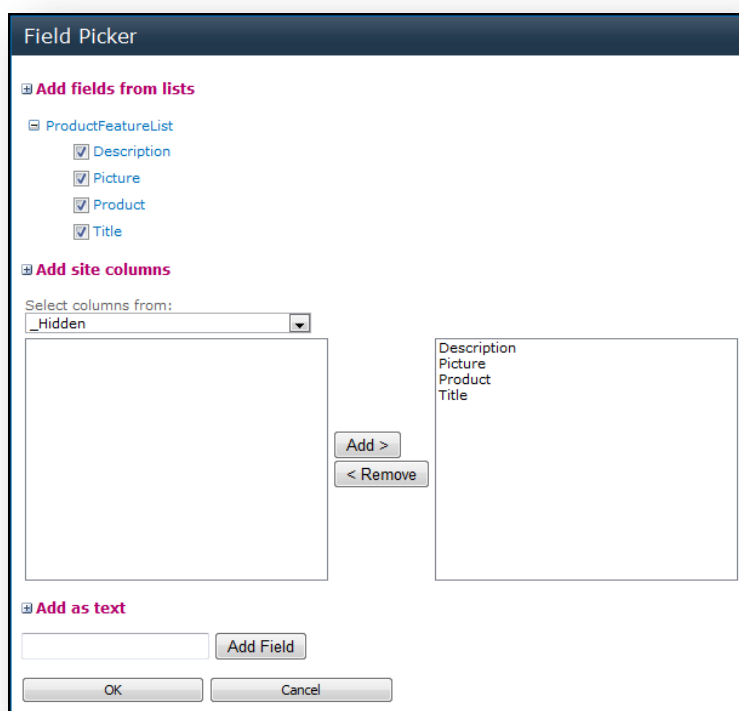


6 Specifying Field Names

A set of fields are retrieved by default by the content rollup web part. These include:

- SiteUrl (global)
- WebUrl (global)
- WebTitle (global)
- ListId
- WebId
- ID
- FileDirRef
- FileRef
- Title
- ContentTypeId
- LinkFileName
- Url

Additional fields can be specified using the field picker. To add a site column, first select the group from the drop down list then add the field using the “Add” button. Field names can also be entered as text by typing the name in the text box and clicking the “Add Field” button.



7 How to: add an extra field to the content roll-up

1. Specify rollup list query options and query scope that will return some data – e.g. all document libraries in the site collection.
2. Add your extra fields using the field picker screen. E.g. type the site column name “Created” into the text box and click “Add Field”.
3. Check the “debug mode” checkbox and click the “Apply” button to verify the additional data is successfully retrieved by the query.
4. Open the XSL editor and locate the following snippet of XSL:

```
<!-- Define Display Columns Here -->
<xsl:variable name="RenderColumns">
<Columns>
    <Title headerText="Title"/>
</Columns>
</xsl:variable>
```

5. The RenderColumns variable defines the columns that will be rendered out to the screen. To add an extra column such as the “Created” site column, the XSL should be modified as follows:

```
<!-- Define Display Columns Here -->
<xsl:variable name="RenderColumns">
<Columns>
    <Title headerText="Title"/>
    <Created headerText="Date Created"/>
</Columns>
</xsl:variable>
```

8 How to: format a date using XSLT scriptlets

Building on the previous example, we will modify the formatting of the created date field to omit the time component. By default all fields render out their value as text. A data template can be added to customise the rendering behaviour of a particular field. C# scriptlets can be used for tasks such as string / date formatting as this can be cumbersome in XSLT.

1. Locate the “data templates” section of the XSLT:

```
<xsl:template match="*" mode="CustomTemplate">
  <!-- Define Data Templates Here -->
  <xsl:choose>
    <xsl:when test="name() = 'Title'">
      ...
    </xsl:when>
    <xsl:otherwise>
      <xsl:value-of select="text()"/>
    </xsl:otherwise>
  </xsl:choose>
</xsl:template>
```

2. Add in a custom data template for the “Created” field before the xsl:otherwise as follows:

```
<xsl:template match="*" mode="CustomTemplate">
  <!-- Define Data Templates Here -->
  <xsl:choose>
    <xsl:when test="name() = 'Title'">
      ...
    </xsl:when>
    <xsl:when test="name() = 'Created'">
      <xsl:value-of select="consys:getShortDate(..Created/text())"/>
    </xsl:when>
    <xsl:otherwise>
      <xsl:value-of select="text()"/>
    </xsl:otherwise>
  </xsl:choose>
</xsl:template>
```

This will use the getShortDate scriptlet defined at the bottom of the XSL file to render the date as a short date. You can add additional scriptlets of your own and call them in the same fashion.

```
<msxsl:script language="C#" implements-prefix="consys">
  <![CDATA[
```

```
public string getShortDate(string text)
{
    if (!string.IsNullOrEmpty(text))
    {
        return System.DateTime.Parse(text).ToShortDateString();
    }
    else
    {
        return text;
    }
}
]]>
</msxsl:script>
</xsl:stylesheet>
```

9 How to: format a lookup value using XSLT scriptlet

Many rollup fields will be returned as lookup values formatted as follows “3;#SitePages”. These can be formatted correctly using the “getLookupValue” scriptlet. The technique for using this is identical to using the getShortDate scriptlet detailed above.